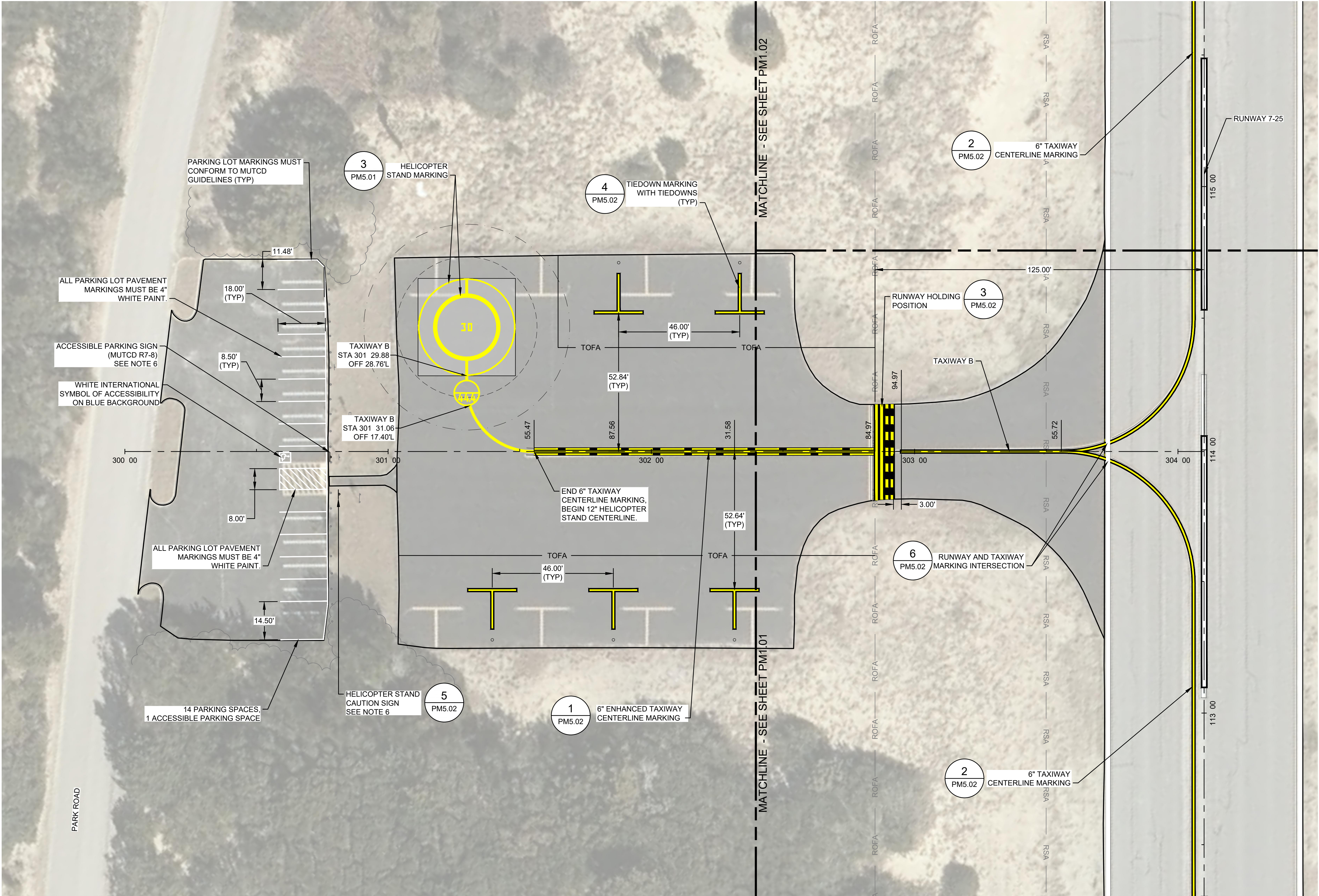


FILE NAME: OBX-HSE-PM1.DWG  
PLOT DATE: S P 13 . 2024 - 1:57PM



NOTES

1. PARKING LOT PAVEMENT MARKING TO FOLLOW MUTCD STANDARDS.
2. FOR DEMOLITION PLANS, SEE SHEETS CD1.01 THROUGH CD1.04.
3. FOR PAVING AND GRADING PLANS, SEE SHEETS C1.01 THROUGH C1.04.
4. SEE SHEET CD5.01 FOR EXISTING PAVING SECTIONS.
5. SEE SHEETS C5.01 AND C5.02 FOR PAVING DETAILS.
6. SEE SHEETS PM5.01 THROUGH PM5.02 FOR PAVEMENT MARKING DETAILS.
7. CONTRACTOR TO SUBMIT PROPOSED SIGN POST AND FOUNDATION.

BY OTHERS - NOT IN CONTRACT

WSP USA INC.  
NORTH CAROLINA  
LICENSE NO. F-0165

1001 MOREHEAD SQUARE DRIVE  
SUITE 610  
CHARLOTTE, NC 28203  
T 704-342-5401 | www.wsp.com

NO.	DESCRIPTION	DATE

**BILLY MITCHELL AIRPORT (HSE)**

**PAVEMENT REHABILITATION PROJECT**  
NCDOT PROJECT NO. 36244.74.1.1

53252 BILLY MITCHELL ROAD  
FRISCO, NC 27936

**ISSUED FOR BID**

SEAL 053220  
ENGINEER  
Richard D. Bates  
971672074

SHEET TITLE  
**PAVEMENT MARKING PLAN  
SHEET 3 OF 4**

DATE	SEPTEMBER 16, 2024
SCALE	1" = 20'
DRAWN BY	KR
CHECKED BY	RDB
APPROVED BY	RDB

WSP PROJECT NUMBER	188695-05
SHEET NUMBER	<b>PM1.03</b>
SHEET 23 OF 26	

0 10' 20' 40'  
HORIZONTAL SCALE 1"=20'

**KEY PLAN**

SCALE (S) AS NOTED ON THIS SHEET ARE BASED ON A FULL SIZE 22 X 34 SHEET.